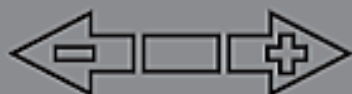




SOLAR CELL

Located at the top of the E-coder, supplies power for the LCD panel (light activated.)



FLOW INDICATOR

Shows the direction of flow through the meter:

ON	Water in use.
OFF	Water not in use.
FLASHING	Water is running slowly.
(-)	Reverse flow.
(+)	Forward flow.



LEAK INDICATOR

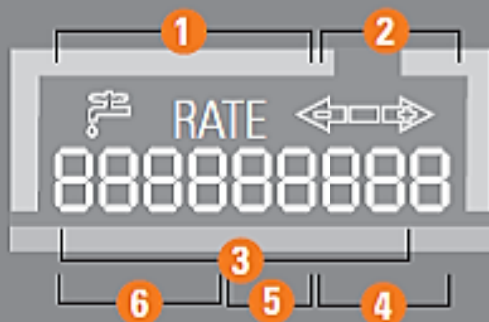
Displays a possible leak:

OFF	No leak indicated.
FLASHING	Intermittent leak indicates that water has been used for at least 50 of the 96 15-minute intervals during a 24-hour period.
ON CONTINUOUSLY	Indicates water use for all 96 15-minute intervals during a 24-hour period.

RATE

RATE OF FLOW

Average flow rate is displayed every six seconds on LCD display.



LCD DISPLAY

Nine-digit LCD displays the meter reading in billing units of measure: U.S. gallons, cubic feet, Imperial gallons, or cubic metres.

- 1** E-Coder Basic Reading/Customary 6-digit remote reading
- 2** Customary sweep hand digits
- 3** E-Coder PLUS Reading (8-digit remote reading)
- 4** Testing units used for diagnostics
- 5** Extended reading units
- 6** Customary billing units